



INSTITUTE FOR SOCIAL RESEARCH • SURVEY RESEARCH CENTER
SURVEY RESEARCH OPERATIONS
UNIVERSITY OF MICHIGAN

Examining Field Practices in Two Recent Youth Studies: Lessons Learned

IFD&TC 2015

Sarah Crane and Hongyu Johnson

DCO, PDMG



Outline

- Background
- Measuring Efficiency in Data Collection
- Challenges & Lessons Learned
- Operational Improvements
- Questions



Background

Why is our work in this research important?

- At-risk students
- Large urban areas
- Testing large scale interventions

Is in-home interviewing always the best model for adolescents, in these areas?



Study A Background

- Sample size: ~600 students
- Male and female high school students
- Treatment and control groups
- Cohort design
- School based intervention
- 9 month field period



Study A Outcome

- Successful data collection, but inefficient
- Some elements didn't perform as predicted
- Took what we learned from Study A and adjusted field operations to improve Study B



Measuring Efficiency in Data Collection

- Paradata helps us determine efficiency
 - How long does it take an interviewer, from beginning to end, to complete an interview?
 - What expenses do we incur for local travel?
 - How much time do interviewers spend on non-data collection tasks?



Hours Per Interview

- Paradata measure of interviewer burden
- Used to estimate costs (for example, staffing) and track expenses

	Study A Predicted	Study A Actual
HPI	10	16



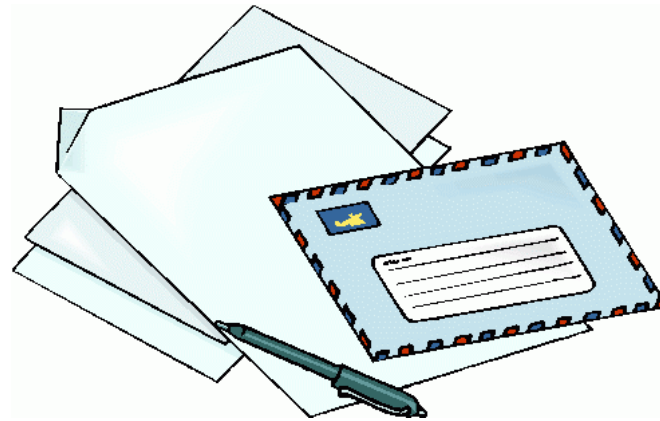
Challenges in Study A

1. Recruiting families and students
2. Dual consent
3. Scheduling
 - a) Parent present for interview
 - b) Broken appointments



Challenge #1: Recruitment

- Advance mailing



- Telephone & in person recruitment
- Locating



Challenge #2: Consent

- Dual consent:
 - Parent/Guardian Consent
 - Student Assent
- Multi-component
- In person
- Electronic (hard copy as back-up)



Challenge #3: Scheduling

- Parent present for interview
- Home or other public location
- Broken appointments



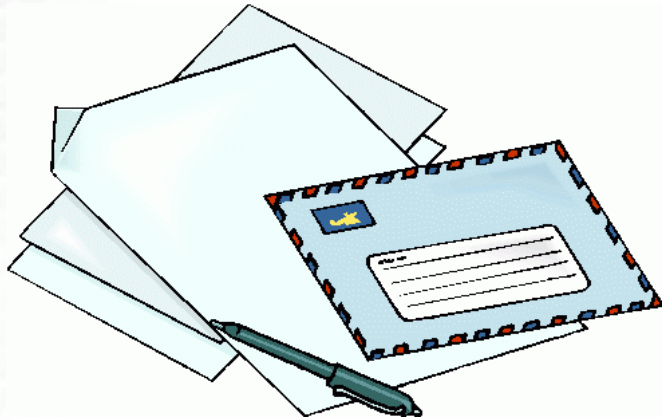
Operational Improvements

- Multiple modes of parental permission
- 10% of Study B parental consents were completed and returned by mail

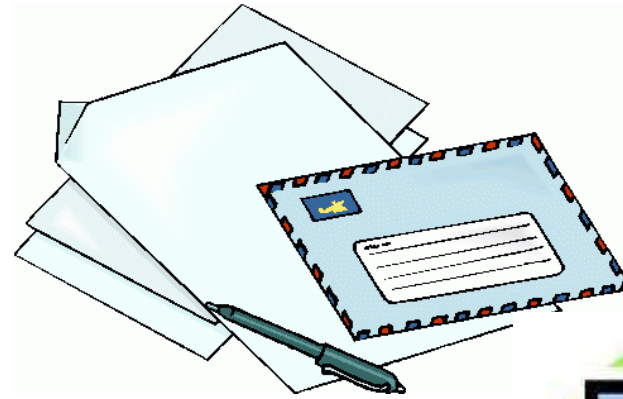


Consent Process

Study A



Study B





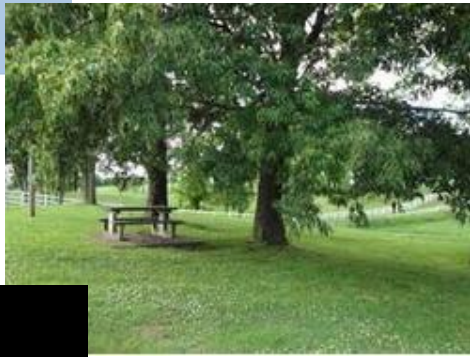
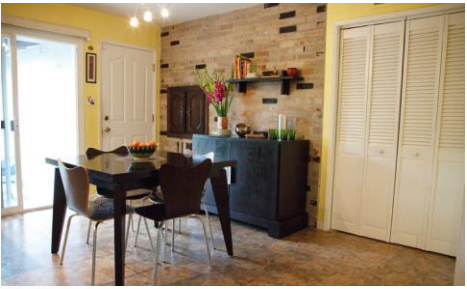
Operational Improvements (2)

- Scheduling
 - “Designated adult”
 - In-school administration
- Study B conducted 20% of in-person interviews in school

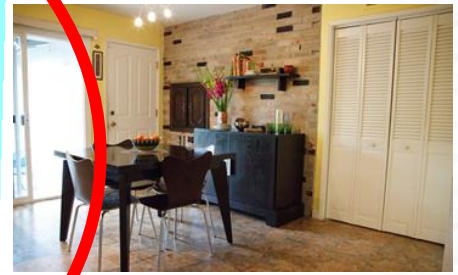


Interviewing Locations

Study A



Study B





Study B Outcome

- Gained efficiencies = budget underrun

	Study A Budgeted	Study A Actual	Study B Budgeted	Study B Actual
HPI	10	16	9.5	8.5



Questions?



Follow Up

- Sarah Crane sccrane@umich.edu
- Helen Johnson hongyuj@umich.edu